

WATERCO
water, the liquid of life

W MICRON
FIBREGLASS FILTERS





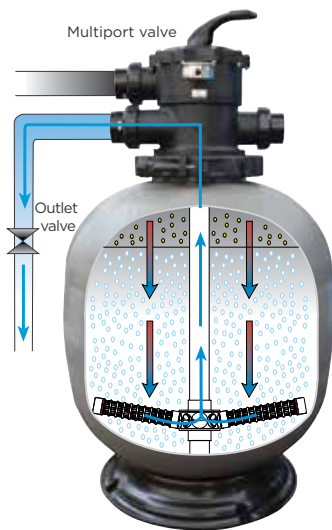
* Micron 50mm port ECO range

Micron filters operate on the basis of “depth filtration” dirt is driven through the filter bed and trapped in minute spaces between the particles of filter media allowing the cleansed water to pass through the filter’s laterals and exit via the filter’s Multiport valve.

Simple maintenance

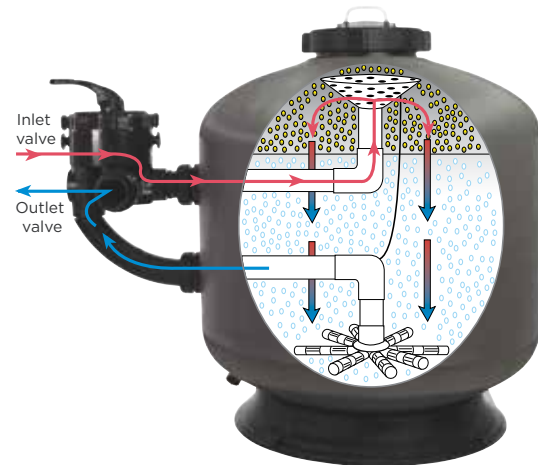
The effectiveness and efficiency of the filter can be compromised by excessive debris accumulation. When the filter media becomes overfilled, it leads to increased pressure and poor circulation. To clean the filter, turn the Multiport lever from the “filter” position to the “backwash” position. This action reverses the water flow through the filter, helping to flush out the debris from the filter bed.

Top mount configuration

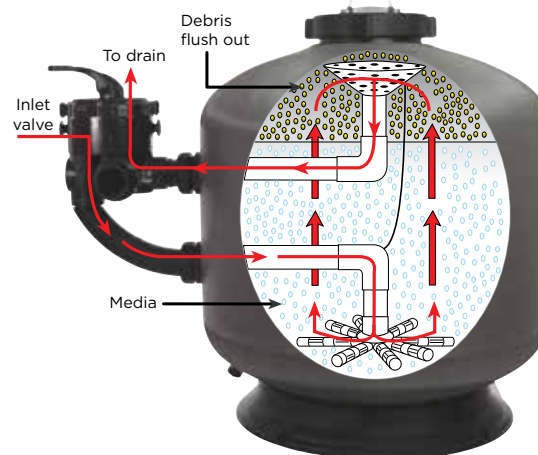
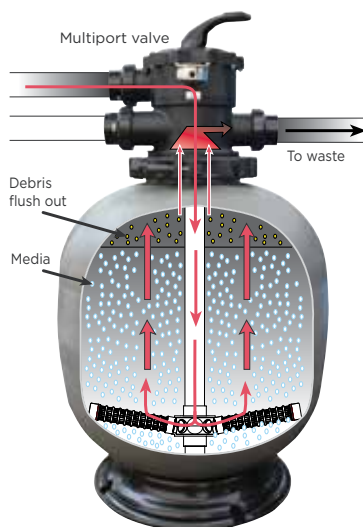


Side mount configuration

Filter mode



Backwash mode



Filament wound filters

Micron fibreglass filters embody the latest in fibreglass winding technology. Micron fibreglass vessels consist of an inner shell of fiberglass reinforced polyester resin wound over with fibreglass filament. Waterco's digitally controlled filament winding machine faultlessly winds continuous strands of high quality fibreglass filament under controlled tension filament to create a seamless one-piece vessel with refined consistency and superior quality. There are no welds or seams or special tank linings which can corrode or electrolyse.

The Micron S600 and S602 models come with a clamp band feature, which allows for versatile installation in any direction or position.

One significant advantage of the new S600 & S602 models is the use of injection moulding for manufacturing the inner tank. This manufacturing technique ensures improved consistency in the production process. By using injection moulding, Waterco can achieve a higher level of precision and uniformity in the inner tank's construction.

Micron S600 and S602 models maintain Waterco's high-quality standards and durability, and can operate at an increased pressure of 350kPa.



Water saving “Fish tail” laterals

Micron ECO filters are equipped with “Fish tail” laterals, to improve its filtration and backwashing hydraulic efficiency.

“Fish tail” laterals provide effective coverage of the filter bed and balanced water flow, during backwashing.

Micron ECO filters backwash time is significantly reduced, leading to a 30% savings of backwash water.

Energy saving “Fish tail” laterals

The Micron ECO filters hydraulic efficiency halves the backwash flow rate of a conventional media filter, allowing the option for low powered, energy efficient pumps for filtration flow and backwash flow.



Conventional filter lateral system



Micron ECO “Fish tail” lateral system

Enhanced water clarity

Lowering a filter's flow rate not only significantly decreases the pump's energy requirements, but also reduces water flow resistance in your pool equipment and plumbing.

A lower flow rate also has the added benefit of enhancing your pool's filtration efficiency, greatly enhancing the clarity of your swimming pool water.



MICRON FIBREGLASS FILTERS

Micron sidemount fibreglass

Micron top mount fibreglass

** Optional manual drain*

Fibreglass wound tank, UV and corrosion resistant

Pressure gauge

Six position Multiport valve with sight glass and quick connect half unions

Inflow diffuser for even distribution of water flow across the filter bed



Large filter base for stable floor mounting.

Drain plug

Hydraulically balanced laterals to maximise water flow and filtration.

Fibreglass wound tank, UV and corrosion resistant



Large filter base for stable floor mounting.

- Working pressure 350 kPa* (51 psi)
- Extra reinforcement to increase the working pressure rating to 400 kPa (58 psi) is available on request.
- Maximum working temperature of 50°C (122°F)

** S600 & S602 Rated 350KPA and all other Micron models 250kPa.*

MULTI PORT VALVES

Metric or
imperial quick
connect unions

High grade
stainless steel
components

Durable
lever action
handle

6 way
multiple valve
positions



Clear sight glass
for backwash
inspection

Glass filled
thermoplastic

Pressure
gauge

Wear
resistant
rotor

Warranty

Filters are covered by a 10-year tank warranty, 3-year multiport valve warranty and 1-year warranty on all other components.

Commercial installations are covered by a 5-year (1 year full + 4 years pro rata) tank warranty, 2-year multiport valve warranty and 1-year warranty on all other components.

Please refer to Waterco's warranty terms and conditions.

Reduced Water Flow Resistance

The 24" / 600mm filters are equipped with a 40mm multiport valve. The Micron ECO S602, S702, S800 & S900 are equipped with a hydraulically efficient 50mm multiport valve to reduce the filter's overall resistance to water flow.

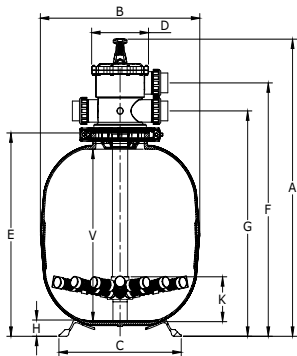
The filter's low water flow resistance, facilitates better performance from multi-speed and variable speed pumps.



Micron top mount technical specification

Filter Model	Valve Size (mm)	Inner Diameter (mm)	Filter Area (m ²)	Bed Depth (mm)	Max. Flow (lpm)	Max. Pool Size** (litres)	Backwash flowrate (lpm)	Media Volume (litre)	Glass Pearl Media (kg)	Ecopure 0.815-1.5 (kg)	Sand 16/30 (kg)	Zeoplus 1-2.2 (kg)
S600INJ	40	600	0.28	295	226	81,000	189	106	171	127	155	127
S602INJ	50	600	0.28	295	226	81,000	189	106	171	127	155	127
S702	50	700	0.38	340	308	111,000	257	154	248	185	225	185
S800	50	800	0.50	420	402	145,000	335	233	375	279	340	279
S900	50	900	0.64	420	509	183,000	424	322	518	386	470	386

Residential flow rate based on a velocity of 48m³/hr/m². Max. pool size is based on a 6 hr turnover.



Micron top mount dimension (mm)

Model	A	B	C	D	E	F	G	H	V	K
S600INJ	1022	622	484	180	735	879	787	88	620	136
S602INJ	1050	624	484	220	727	902	804	58	615	160
S702	1072	723	620	220	722	892	792	90	652	122
S800	1157	810	620	220	807	977	877	90	713	111
S900	1234	910	620	220	884	1054	954	90	785	163



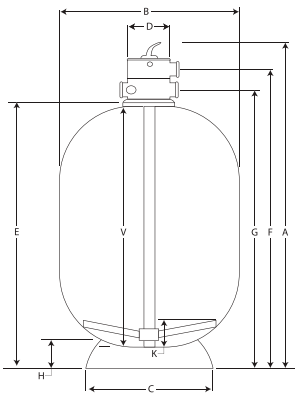
Micron top mount deep bed filter

Micron deep bed filters are designed with a guaranteed filter bed depth of 500mm, providing enhanced in-depth filtration and increased dirt capacity.

Micron top mount deep bed technical specification

Filter Model	Valve Size (mm)	Inner Diameter (mm)	Filter Area (m ²)	Bed Depth (mm)	Max. Flow (lpm)	Max. Pool Size** (litres)	Backwash flowrate (lpm)	Media Volume (litre)	Glass Pearl Media (kg)	Ecopure 0.815-1.5 (kg)	Sand 16/30 (kg)	Zeoplus 1-2.2 (kg)
SD400	40	400	0.13	500	101	36,000	84	68	109	82	100	82
SD500	40	500	0.20	500	157	57,000	131	105	169	126	154	127
SD600	40	600	0.28	500	226	81,000	189	161	259	193	235	193
SD750	50	750	0.44	500	353	127,000	295	247	398	296	360	296
SD900	50	900	0.64	500	509	183,000	424	377	607	452	550	452

Residential flow rate based on a velocity of 48m³/hr/m². Max. pool size is based on a 6 hr turnover.



Micron top mount deep bed dimension (mm)

Model	A	B	C	D	E	F	G	H	V	K
SD400	1220	405	356	160	953	1084	1005	61	846	57
SD500	1220	505	443	160	953	1084	1005	69	846	57
SD600	1220	624	540	160	953	1084	1005	88	828	69
SD750	1320	776	678	220	970	1140	1040	120	838	125
SD900	1372	910	678	220	1022	1192	1092	120	880	172



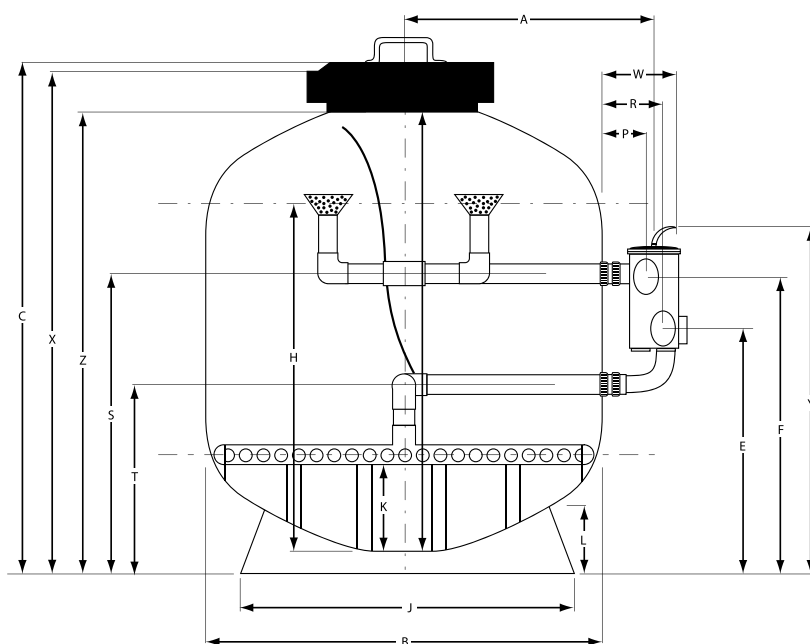
Micron side mount technical specification

Filter Model	Valve Size (mm)	Inner Diameter (mm)	Filter Area (m ²)	Bed Depth (mm)	Max. Flow (lpm)	Max. Pool Size** (litres)	Backwash flowrate (lpm)	Media Volume (litre)	Glass Pearl Media (kg)	Ecopure 0.815-1.5 (kg)	Sand 16/30 (kg)	Zeoplus 1-2.2 (kg)
SM600	40	600	0.28	360	226	81,000	189	113	182	136	165	136
SM600	50	600	0.28	360	226	81,000	189	113	182	136	165	136
SM750	50	750	0.44	400	353	127,000	295	195	314	234	285	234
SM900	50	900	0.64	440	509	183,000	424	301	485	362	440	362

Residential flow rate based on a velocity of 48m³/hr/m². Max. pool size is based on a 6 hr turnover.

Micron side mount dimension (mm)

Model	A	B	C	W	R	P	E	F	K	V	H	L	X	Y	Z	J	S	T
SM600	526	622	906	306	249	171	520	574	105	690	601	87	873	718	800	484	520	317
SM600 c/w 50mm	530	622	906	306	249	171	520	574	105	690	601	87	873	718	800	484	520	317
SM750	613	772	976	334	262	191	541	643	113	763	652	90	943	800	870	620	541	337
SM900	689	923	1086	334	262	191	591	693	113	860	750	90	1053	850	980	620	591	387



Warranty

Micron filters	10 Years (conditional)	Commercial installations	5 Years (conditional)
Filter tank	10 Years	Filter tank	5 Years (1 year full + 4 years pro rata)
Multiport valve	3 Year	Multiport valve	2 Year
Labour	1 Year	Other components	1 Year
Other components	1 Year		

Please refer to Waterco's Warranty Terms and Conditions

WATERCO

water, the liquid of life



Waterco pioneers reliable solutions for healthy, safe water environments, which are used in residential, commercial and industrial applications in over 40 countries.

Established in 1981, it has since become a global brand recognised for designing and manufacturing filtration and sanitisation innovations for the swimming pool, spa, aquaculture, and water purification sectors.

CONTACT WATERCO

Waterco's head office is situated in Sydney, Australia with international offices, manufacturing plants and warehouses located in Australia, New Zealand, Malaysia, Indonesia, Singapore, China, Vietnam, USA, Canada, and the UK.

OFFICES - AUSTRALIA

NSW - Sydney (Head Office)

Tel: +61 2 9898 8686

QLD - Brisbane

Tel: +61 7 3299 9900

VIC/TAS - Melbourne

Tel: +61 3 9764 1211

WA - Perth

Tel: +61 8 9273 1900

SA/NT - Adelaide

Tel: +61 8 8244 6000

ACT Distribution

Tel: +61 2 6280 6476

OFFICES - OVERSEAS

Waterco (Europe) Limited

Sittingbourne, Kent, UK

Tel: +44 (0) 1795 521 733

Waterco (USA) Inc

Augusta, Georgia, USA

Tel: +1 706 793 7291

Waterco Canada

Boucherville, Quebec, Canada

Tel: +1 450 748 1421

Waterco (NZ) Limited

Auckland, New Zealand

Tel: +64 9 525 7570

Waterco (C) Limited

Guangzhou, China

Tel: +86 20 3222 2180

PT Waterco Indonesia

Jakarta, Indonesia

Tel: +62 21 4585 1481

Waterco Singapore Intl Pte Ltd

Midview City, Singapore

Tel: +65 6344 2378

Waterco (Far East) Sdn Bhd

Selangor, Malaysia

Tel: +60 3 6145 6000

Waterco Vietnam Company Limited

Ho Chi Minh City, Vietnam

Tel: +84 28 3622 7780



SCAN ME

www.waterco.com

Distributed by: