

# AUTOMATIC WATER LEVELLER MKII

## Automatic Water Leveller MKII



### AUSTRALIA

NSW - Sydney (HEAD OFFICE)

Tel : +61 2 9898 8600

VIC/ TAS - Melbourne

Tel : +61 3 9764 1211

WA - Perth

Tel : +61 8 9273 1900

QLD - Brisbane

Tel : +61 7 3299 9900

SA/ NT - Adelaide

Tel : +61 8 8244 6000

### CANADA / NORTH-EAST USA

Waterco Canada Inc

Longueuil, Quebec, Canada

Tel : +1 450 748 1421

### USA

Waterco USA Inc

Augusta, Georgia, USA

Tel : +1 706 793 7291

### NEW ZEALAND

Waterco (NZ) Limited

Auckland, New Zealand

Tel : +64 9 525 7570

### CHINA

Waterco © Limited

Guangzhou, China

Tel : +8620 3222 2180

### EUROPE

Waterco (Europe) Limited

Sittingbourne, Kent. UK

Tel : +44(0) 1795 521 733

### MALAYSIA

Waterco (Far East) Sdn. Bhd.

Selangor, Malaysia

Tel : +60 3 6145 6000

[www.waterco.com.au](http://www.waterco.com.au)

This web site address will enable you to select the appropriate country website.

**WATERCO**

Waterco Limited ABN 62 002 070 733



**SPASA**  
AUSTRALIAN MEMBER

**WATERCO**

water, the liquid of life

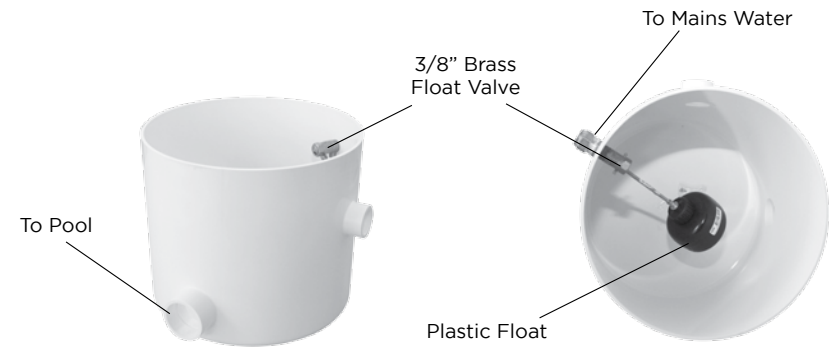
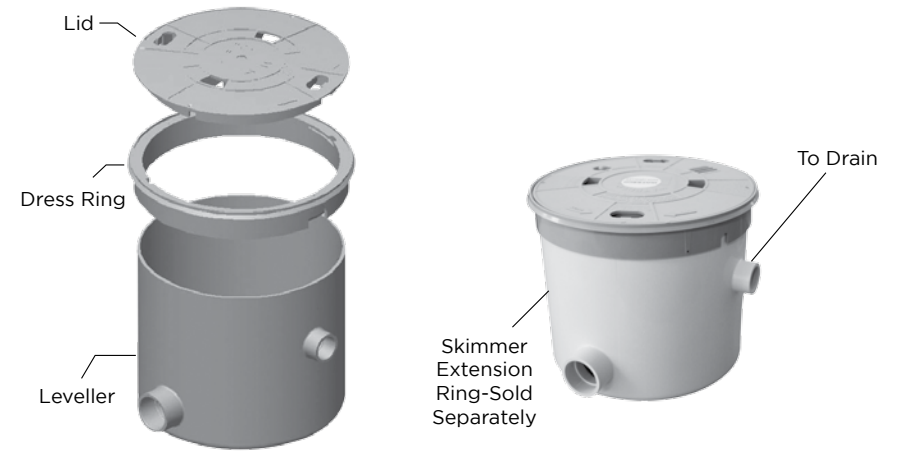
[www.waterco.com.au](http://www.waterco.com.au)

# Table of Contents

Introduction .....	02
Product & Components Identification .....	03
Application .....	04
Installation .....	04
Maintenance .....	06
Warranty .....	06

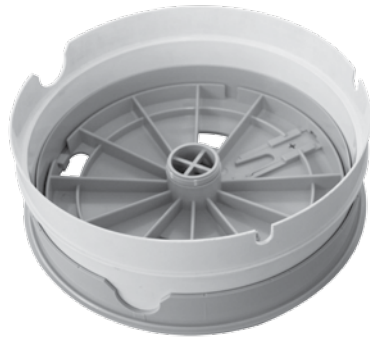
## Introduction

The Waterco Automatic Water Leveller MkII adds to the leisure time of the pool owner by eliminating the need to keep an eye on the water level.





Lid and Dress Ring Assembly

Skimmer Extension Ring  
(Sold Separately)Lid, Dress Ring and Extension Ring  
Assembly (upside-down)

Lid and Dress Ring

## Application

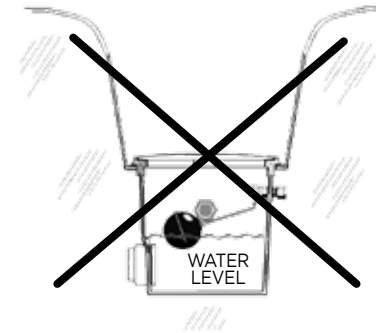
The Waterco Automatic Water Leveller MkII is placed in the ground at a convenient location near the pool. It is plumbed to a separate inlet from the pool with 40mm UPVC pipe, overflow with 25mm UPVC and to a fresh water supply with 15mm (1/2") copper pipe.

The leveller remains inactive until the pool water level drops below, or rises above, the correct level. If the water level falls below the correct level, the leveller will put water into the pool by opening the Brass Float Valve. If the water level rises above the correct level (for example during/after heavy rain) the excess water will flow out of the pool through the overflow drain in the leveller.

## Installation

Install the unit in a suitable place with consideration of the following.

1. Ensure normal water run off in rain is not excessive into the unit
2. Ensure dirt, leaves other matter and water run off cannot enter or run off the unit e.g. in a garden with a unit that is well below the surface level and steep sloping sides to the garden bed height (see Fig 1).



**Fig 1:** Example of a poor installation. The leveller is installed well below ground level with steep sloping sides leading to the surface.

3. Ensure that access to the unit is easy and free from obstructions for service requirements
4. Ensure that there is mains water to the area of installation.
5. The water leveller can be installed either at ground level or below ground level as shown in Fig 2.

A below ground level installation is one where the rim of the water leveller would be below ground level. For below ground level installations, the Waterco 60mm Skimmer Extension Ring, which is compatible with the Automatic Water Leveller MkII, can be placed between the leveller and the dress ring (see Fig 2.b). The extension rings are designed so you can use more than one in a single installation, giving you more flexibility with the installation. This eliminates the need for additional tubing.

Install the water leveller so that when the pool is filled to the desired level, the water level inside the leveller will be as deep as the height of the inlet hole but not as deep as the drain hole (refer to Fig 2 for an example). Note that the desired level of the water in the pool should generally be half way up the skimmer box opening. Also make sure the overflow port is located below the overflow level of the pool.

Connect the inlet pipe to the side of the pool with 40mm UPVC piping. The pipe should be installed as deep in the pool as possible. At the very least, the pipe should be deep enough in the pool to ensure the surface wave action in the pool will not expose the pipe in the pool wall. This will ensure the surface wave action in the pool is not transmitted to the water leveller.

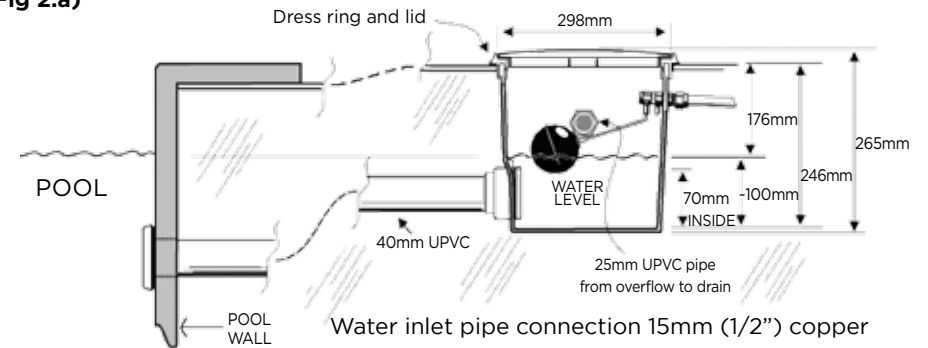
Connect the copper, fresh water supply pipe to the unit and check for leaks. The attachment is made for 15mm (1/2") copper pipe.

Please check with your local council authority regarding the use of back flow prevention device before installation. In some areas it is mandatory that a back flow prevention device be fitted to the water leveller to prevent any chemical residue being passed back into the municipal water supply.

Ensure that the water level will not reach the outlet nozzle of the leveller under normal circumstances; connect the 25mm overflow port to prevent this from happening.

After filling the swimming pool to the desired level with water, only if required, adjust the water leveller to the desired level by simply (gently) bending the float arm. The float should sit on the surface of the water, or be partly (less than half) submerged, with the Brass Float Valve closed.

**Fig 2.a)**



**Fig 2.b)**

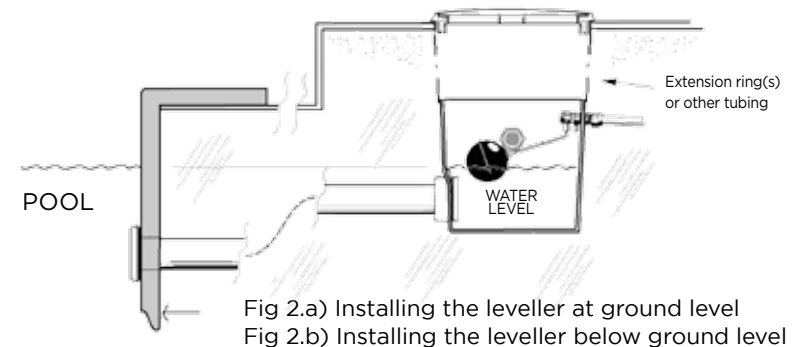


Fig 2.a) Installing the leveller at ground level  
Fig 2.b) Installing the leveller below ground level

## Maintenance

Inspect the unit to ensure that it does not become clogged with dirt and debris which may affect the performance of the water leveller.

Generally, the need to service the unit will be obvious if the unit fails to fill the pool or drain it in conditions that would normally require these actions.

## Warranty

The Waterco Automatic Water Leveller MKII is covered by a 1 year warranty for domestic and commercial installations. Please refer to the detailed Waterco warranty booklet provided.