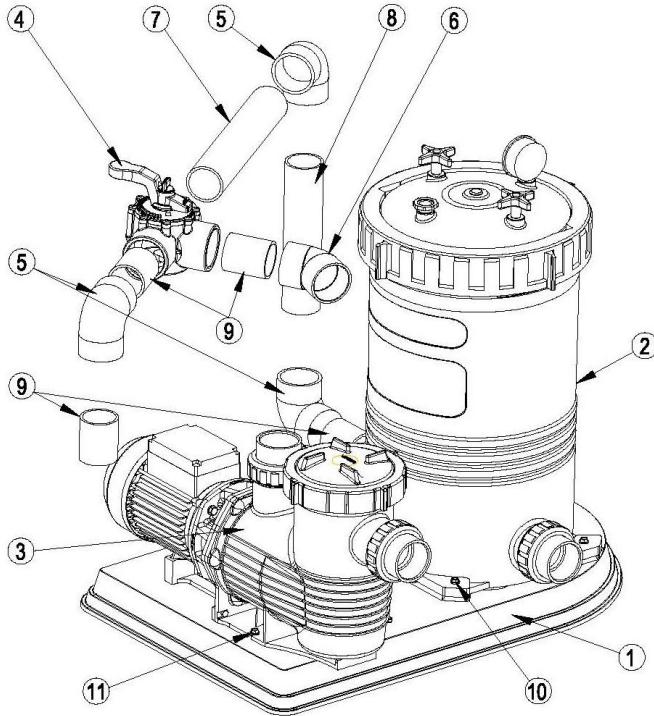


# Opal - Hydrotuf Filtration Skid Pack

## Standard Plumbing Kit Installation Instructions

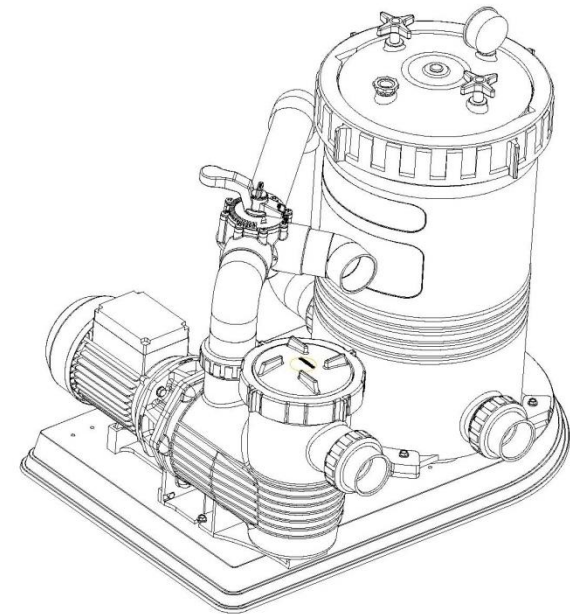
### *Congratulations:*

For choosing to install a Waterco  
Opal – Hydrotuf Filtration Skid  
Pack.



**Illustration 1**

ITEM	DESCRIPTION	QTY	NOTES
1	SKID BASE	1	p/n 455571
2	OPAL FILTER	1	p/n Depends on Model
3	HYDROTUF PUMP	1	p/n Depends on Model
4	50 MM 3WAY VALVE 360 DEG	1	p/n 14860 c/w Plumbing Kit
5	ELBOW 90° X 50MM BLACK	3	p/n 121352 c/w Plumb.Kit
6	ELBOW 45° X 50MM BLACK	1	p/n 121052 c/w Plumbing Kit
7	PIPE 50MM BLACK - 320MM LONG	1	Supplied with Plumbing Kit
8	PIPE 50MM BLACK - 250MM LONG	1	Supplied with Plumbing Kit
9	PIPE 50MM BLACK - 70MM LONG	4	Supplied with Plumbing Kit
10	SCREW COACH M8X40 S/S	4	Supplied with Skid Base
11	SCREW COACH M6X30 Z/P	2	p/n 45554 c/w Plumb.Kit



**Illustration 2**

The skid pack has been supplied with a Hydrotuf pump & Opal cartridge filter installed on a skid base. The only additional assembly required is the supplied pre-plumbed pipe kit.

1. Un-pack all plumbing kit components and identify from item list, numbered components & Illustration No 1.
2. It is recommended that you pre-assemble and install plumbing kit to skid as illustrated in illustration No 2, prior to applying PVC priming fluid & gluing. This will help to gain correct positioning of all components.
3. Once correct positioning of pre-plumbed pipe components is achieved apply PVC priming fluid & glue into final position.

**Note:** Please refer to manufacturers use & application instructions for PVC priming fluid & glue prior to use. We recommend the use of Waterco's PVC priming fluid & glue

**Note:** Ensure all barrel union connections are tightened sufficiently to prevent water leaks, do not over tighten.