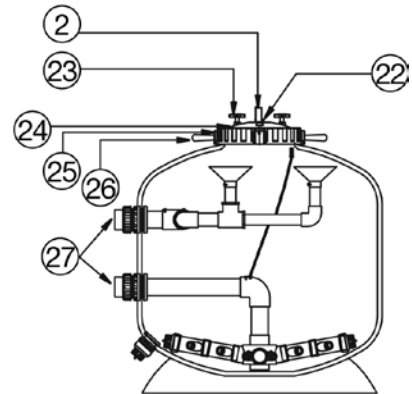
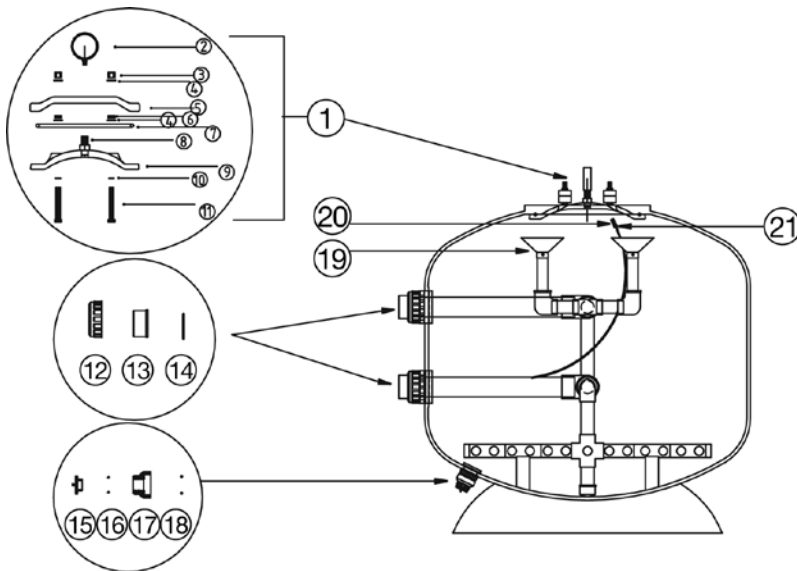


# MICRON SIDE MOUNT COMMERCIAL FILTERS

Part Number	Product Description	Diagram Number
6209440	Man Hole Cover 4 Stud Complete	1
621621	Pressure Gauge Dry 600KPA/90PSI Bottom Mount	2
6340939	Hex Nut M16 (4 required)	3
6340937	Washer M16 S/S304 (8 required)	4
6209430	Lid Yoke Lacron (2 required)	5
W12324	Hex Thin Nut (4 required)	6
6209443	O Ring Manhole Cover Oval 4 Stud - Waterco	7
W12724	S/S Screw 1" BSW Male 1/4" BSP Female Thread	8
6209442	Manhole Cover Only Oval 4 Stud - Waterco	9
6340412	O Ring BS113 (4 required)	10
W12125	Hex Bolt N16X120MM (4 required)	11
6340803	80mm Half Union Black (2 required)	12/13
6340801	100mm Half Union Black (2 required)	12/13
6302550	O Ring B/U 80mm	14
6302553	O Ring B/U 100mm	14
6209303	Drain Plug complete 40mm	15/16/17/18
620940	Funnel For Port Size 3" & 4" (80mm & 100mm) (4 required)	19
620223	Air Relief Tube Screen	20
86172	Gulfstream Plug (only 2 required)	21
620221	Air Relief Valve	22
6202321	Handle for lid 12" (2 required)	23
W02630	Lid 12"	24
620232	Lock Ring 12"	25
6202321	Screwed handle for 12" lock ring (4 required)	26
63406565B	Half union 65mm c/w O ring (2 required)	27



Part No:	Model	Manifold	620921 620922 620923 620924				LATERALS		Lateral End Cap Nut	Lateral End Plug (male)	Hrz Cross Tee	Hrz LCT Extension	Hrz LCT End Cap	Extension Arm	Cap Body	Cap Nut
			75mm	110mm	145mm	200mm	75mm	110mm								
SM1050 65mm Port	65mm	65mm	8	16	-	12	20	-	-	-	-	-	8	4	4	
SM1050 80mm	80mm	80mm	8	20	10	4	32	4	2	8	4	-	-	-	-	
SM1200 65mm Port	65mm	65mm	16	4	20	12	28	-	-	-	-	-	12	4	4	
SM1200	-	-	2	26	8	6	32	4	2	8	4	-	-	-	-	
SM1400	-	-	8	8	36	14	48	4	2	12	4	-	-	-	-	
SM1600 80mm Port	-	-	4	16	42	18	48	4	2	12	4	-	-	-	-	
SM1600 100mm Port	-	-	10	22	22	38	-	60	-	-	-	-	-	-	-	
SM1800	-	-	8	42	22	68	-	76	-	-	-	-	-	-	-	
SM2000	-	-	2	52	20	74	-	80	-	-	-	-	-	-	-	
SM2200 100mm Port	-	-	20	34	78	88	-	96	-	-	-	-	-	-	-	
SM2200 150mm Port	-	-	64	34	30	88	-	96	-	-	-	-	-	-	-	